

## APARTMENT FOR RENT, street Mozartova, Praha 5

This beautifully presented and very stylish three bedroom property (118 sq m) is located in close proximity to legendary Mozart's Bertramka and just around the corner from Nový Smíchov, the business and entertainment centre providing all the facilities and services. The apartment is set on the 5th floor of a small exclusive development of apartments with secure allocated parking. Superbly located in this quiet position yet just moments from the bustling shops and a short stroll to multiply transport links (Anděl metro, trams).

The apartment benefits from a living room complimented by marble fireplace with state of the art Opti-myst technology, that creates smouldering fire effect and realistic flame movements, a fully fitted 5 - meter long kitchen link with granite countertop and backsplash, cosy bar, the latest generation of kitchen appliances, master bedroom suite, balcony providing additional outdoor spaces, 2 additional bedrooms, bathroom with a bathtub, separate toilet, an entrance hall with built - in furniture, a sumptuous master w/walk in closet.

The lateral contemporary style apartment also boasts air-conditioning throughout, hardwood floors, marble flooring, granite tops on all furniture surfaces, collection of crystal chandeliers and lustres, washing machine and dryer AEG, dishwasher, TV, electrical outside blinds, pergola at the terrace. The apartment is equipped with a heat-recovery ventilation unit providing clean air without dust and allergens and lowers energy bills. Aircondition Siemens. Secure car parking space (with direct access into the building). The apartment is available on a furnished basis for long term lets.

1x  3x  

**49 000 CZK**  
+Monthly fees 6 000 CZK

### Specification

Area: 118 m<sup>2</sup>  
Bedrooms: 3  
Bathrooms: 1  
Floor: 4th floor

- Lift
- Alarm
- Storage room
- Washing machine
- Air-conditioning
- Terrace (15 m2)
- Fireplace
- Double garage
- Dryer

Estate id: 5657

Web link:

[www.viphomes.cz/5657](http://www.viphomes.cz/5657)

Agent:

Mária Mihinová

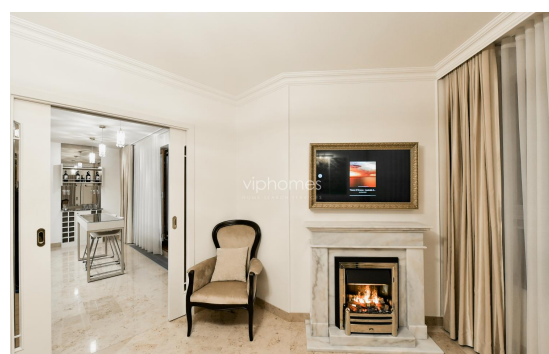
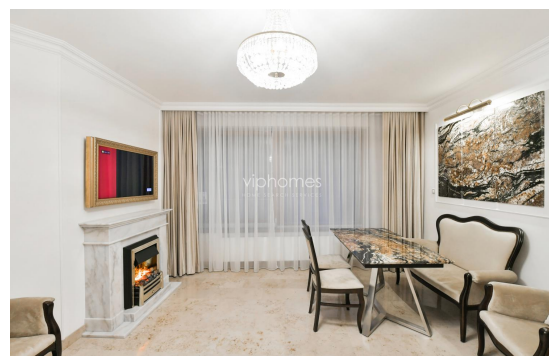
Phone: +420 606 731 973, Email: [viphomes@viphomes.cz](mailto:viphomes@viphomes.cz)

Tenant's fees : advanced payments for services and utilities CZK 6 000 / month and electricity in the amount of 1 000 CZK monthly.

One parking lot at the garage included in the rent.

Second parking lot for a fee.

Available from July, 2024



**Estate id:** 5657

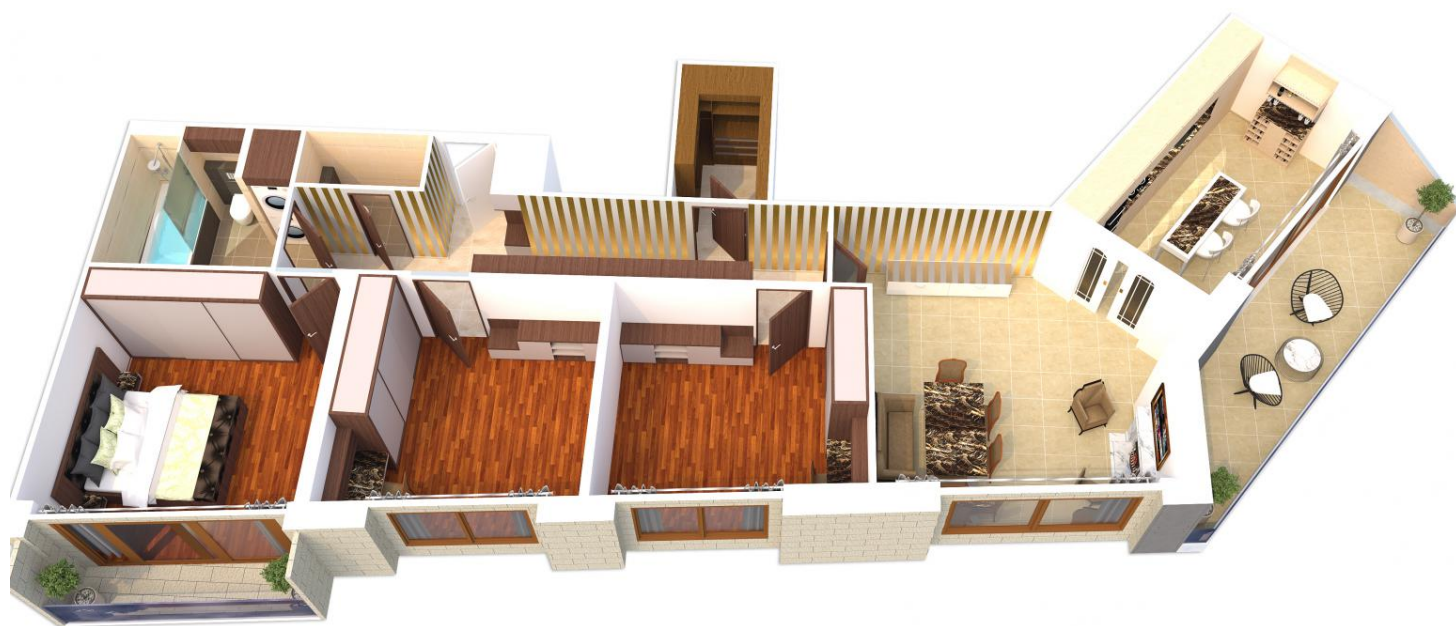
**Web link:**

[www.viphomes.cz/5657](http://www.viphomes.cz/5657)

**Agent:**

Mária Mihinová

Phone: +420 606 731 973, Email: [viphomes@viphomes.cz](mailto:viphomes@viphomes.cz)



**Estate id:** 5657

**Web link:**

[www.viphomes.cz/5657](http://www.viphomes.cz/5657)

**Agent:**

Mária Mihinová

Phone: +420 606 731 973, Email: [viphomes@viphomes.cz](mailto:viphomes@viphomes.cz)



**Estate id:** 5657

**Web link:**

[www.viphomes.cz/5657](http://www.viphomes.cz/5657)

**Agent:**

Mária Mihinová

Phone: +420 606 731 973, Email: [viphomes@viphomes.cz](mailto:viphomes@viphomes.cz)



**Estate id:** 5657

**Web link:**

[www.viphomes.cz/5657](http://www.viphomes.cz/5657)

**Agent:**

Mária Mihinová

Phone: +420 606 731 973, Email: [viphomes@viphomes.cz](mailto:viphomes@viphomes.cz)



**Estate id:** 5657

**Web link:**

[www.viphomes.cz/5657](http://www.viphomes.cz/5657)

**Agent:**

Mária Mihinová

Phone: +420 606 731 973, Email: [viphomes@viphomes.cz](mailto:viphomes@viphomes.cz)

# PRŮKAZ ENERGETICKÉ NÁROČNOSTI BUDOVY

vydaný podle zákona č. 406/2000 Sb., o hospodaření energií, a vyhlášky č. 78/2013 Sb., o energetické náročnosti budov  
evid. č.: 89102.0

Ulice, číslo: Mozartova -

PSC, místo: 150 00 Praha

Typ budovy: Bytový dům

Plocha obálky budovy: 4163,9 m<sup>2</sup>

Objemový faktor tvaru AV: 0,42 m<sup>2</sup>/m<sup>3</sup>

Energeticky vztažná plocha: 3252,6 m<sup>2</sup>



## ENERGETICKÁ NÁROČNOST BUDOVY

**Celková dodaná energie**  
(Energie na vstupu do budovy)

**Neobnovitelná primární energie**  
(Vliv provozu budovy na životní prostředí)

Měrné hodnoty kWh/(m<sup>2</sup>·rok)

Mimořádně úsporná **A**

← 77

Velmi úsporná **B**

← 116

Úsporná **C**

← 154

Málo úsporná **D**

← 231

Nehospodárná **E**

← 308

Velmi nehospodárná **F**

← 385

Mimořádně nehospodárná **G**

← 385

←

**110**

←

← 93

**136**

← 139

← 186

← 279

← 372

← 464

Hodnoty pro celou budovu  
MWh/rok

**359,362**

**440,966**