

## HOUSE FOR RENT, street Šultysova, Praha 6

Boasting a prestigious location, this completely refurbished 1920's family house is situated in close vicinity of the Prague Castle and the popular Ladronka Park with rich opportunities for sports & leisure, plus wealth of local amenities and services nearby. Pleasant and peaceful location offers nice family living with good environment for children, convenient to international schools in Prague 5 / 6, Park Lane, ISP a Riverside School, Deutsche Schule Prag, Lyceé Français. Prague-Ruzyně Airport is also within easy reach.

This four-story semidetached family house comprises living room with a fully fitted open kitchen and access to the terrace and private garden, six bedrooms (including the top floor attic), three bathrooms and formal entry.

Quality floating wood parquet floors, tiles, wooden staircase, alarm, well kept garden with automatic irrigation. Partially furnished. Parking on the lot for two cars.

Unobstructed panoramic views.

Available July 15th, 2024

3x

6x

**69 000 CZK**  
+Monthly fees 8 000 CZK

### Specification

Detached house

Area: 182 m<sup>2</sup>

Bedrooms: 6

Bathrooms: 3

- ☒ Terrace
- ☒ Storage room
- ☒ Air-conditioning

- ☒ Garden (250 m<sup>2</sup>)
- ☒ parkovací stání

**Estate id:** 3813

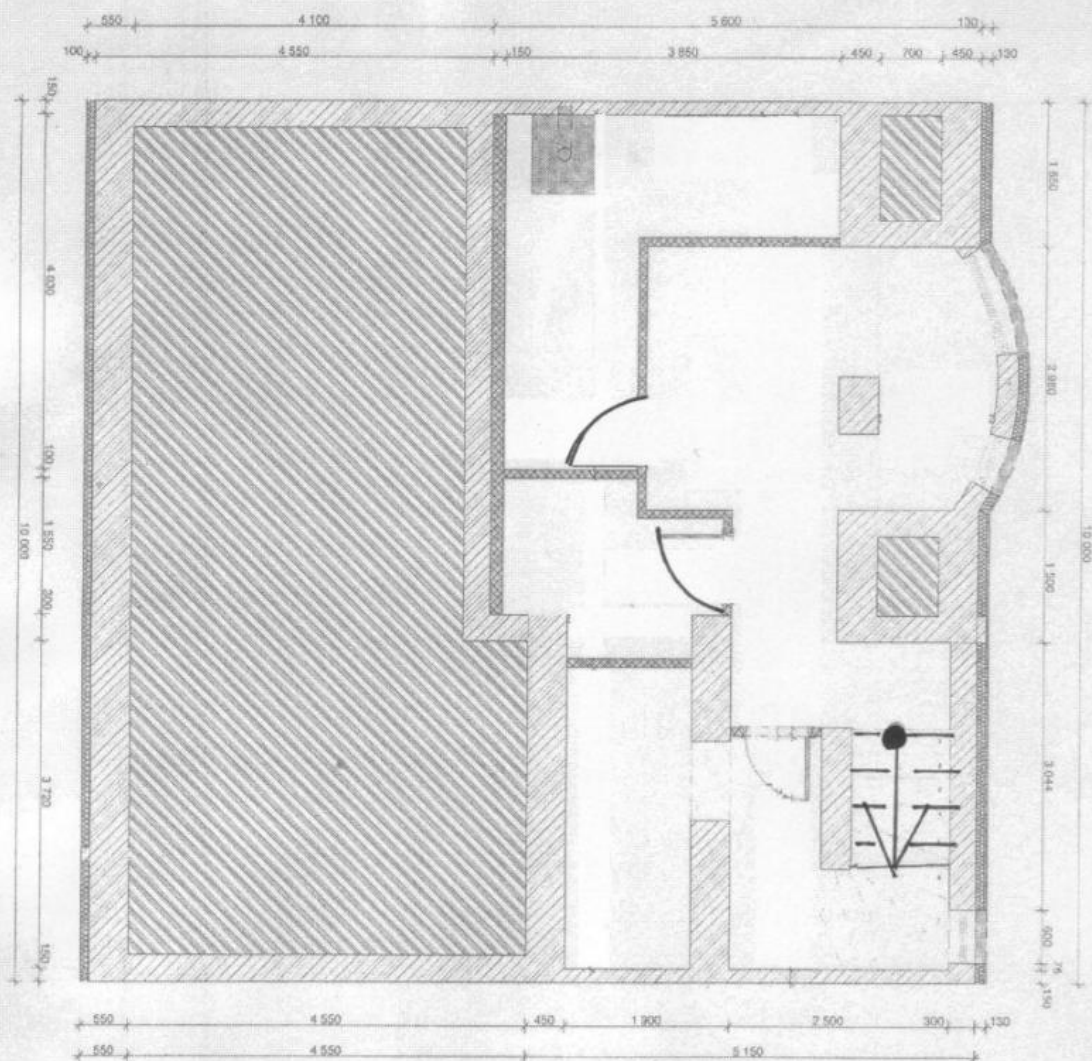
**Web link:**

[www.viphomes.cz/3813](http://www.viphomes.cz/3813)

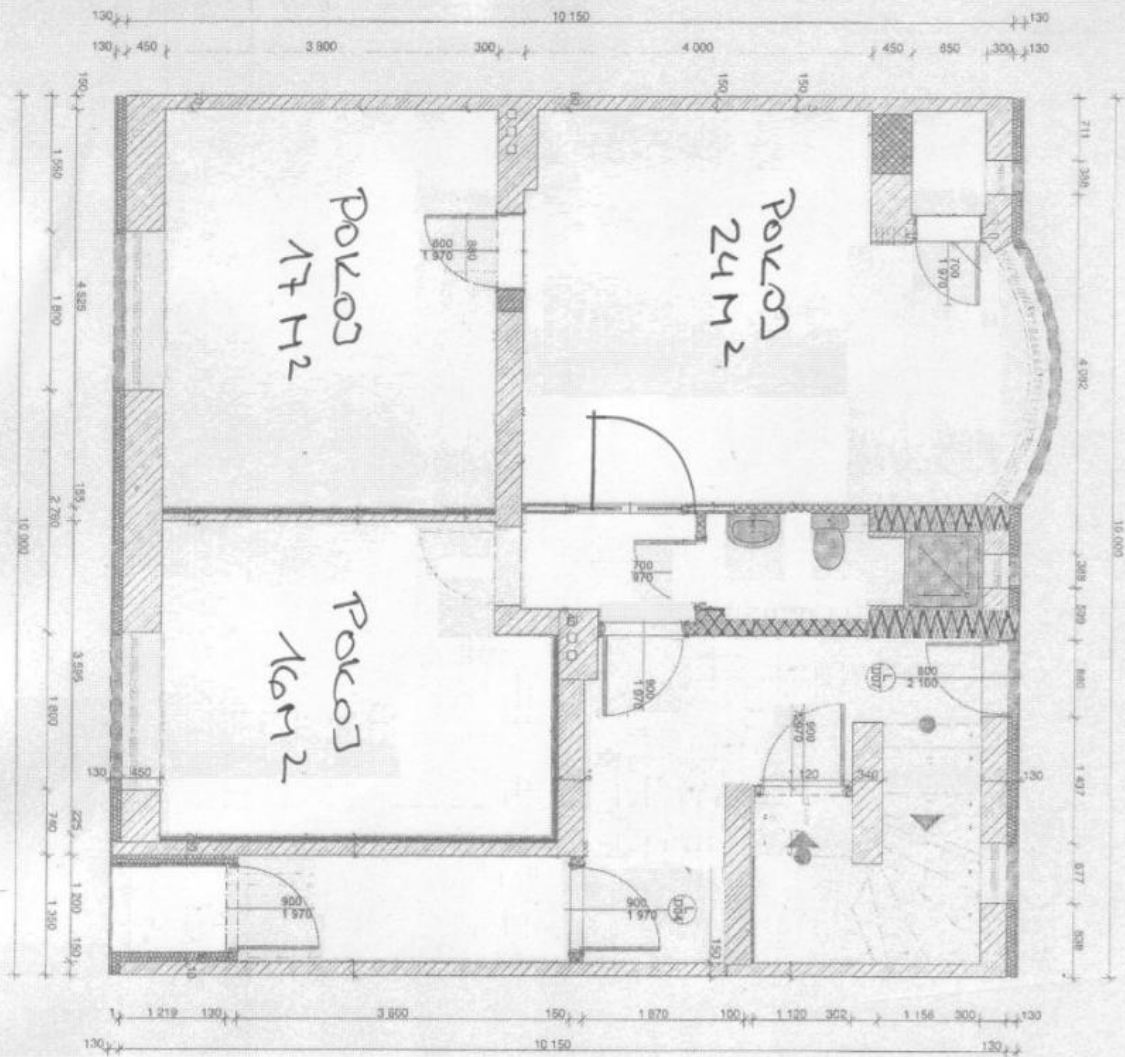
**Agent:**

Mária Mihinová

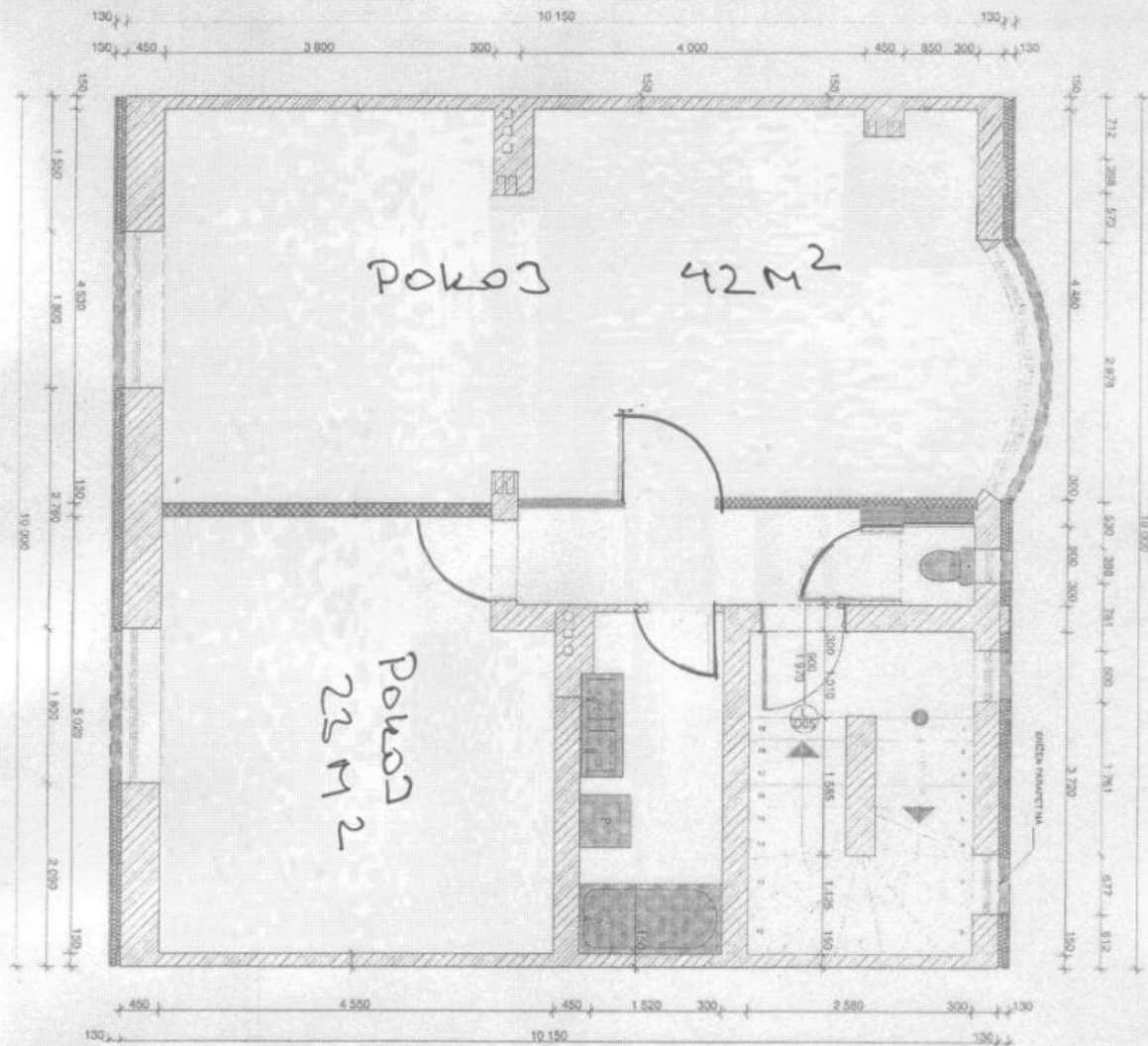
Phone: +420 606 731 973, Email: [viphomes@viphomes.cz](mailto:viphomes@viphomes.cz)



PUDORYS 1. PP TECHNICKÉ PODOZÁŤI 35M<sup>2</sup>



PUDOKYS 1.NP



PŮDORYS 2. NP

PUĖDRAVYS PODKROVĖ

