

APARTMENT FOR RENT, street Sartoriova, Praha 6

South-facing three-bedroom apartment with a terrace and a balcony located in a highly popular Prague's residential location Prague 6 - Břevnov, 15 minutes from the international airport Ruzyně Prague and few minutes drive away is the beautiful environment of Břevnov monastery, Prague Summerhouse Star and Ladronka Park.

The apartment set on the first floor of a renovated building has undergone extensive, complete renovation and features: bright and spacious living room, open F/F kitchen, three bedrooms, a shower bathroom, two separate toilets, and a utility room equipped with a washing machine, additional storage space. The apartment features a large terrace spanning the entire living area, and one bedroom opens onto a balcony (both facing south). Well-designed apartment features a separate sleeping area, i.e., two bedrooms with an adjacent bathroom featuring a shower and toilet. The third bedroom is located in the other part of the apartment next to the living room and has access to a balcony. Modern kitchen with integral appliances (electric induction cooktop, electric oven, dishwasher, range hood, refrigerator with freezer).

Vinyl flooring; the bathroom and toilets feature modern tile designs. The bedrooms have blinds on the windows.

Monthly fees, including electricity consumption, in the amount of 8,500 CZK and are billed annually based on actual consumption.

Quiet location, large parks, full civic amenities, rich shopping options (Main Bělohorská Street, cafés, Albert supermarket, shops, bakery, restaurants). Prestigious Schools and kindergartens nearby.

1x  3x 

42 000 CZK
+Monthly fees 8 500 CZK

Fee Information 1 month rent + 21 % VAT.

Specification

Area: 125 m²

Bedrooms: 3

Bathrooms: 1

Floor: Ground floor

Balcony

Terrace

Washing machine

Estate id: 6989

Web link:

www.viphomes.cz/6989

Agent:

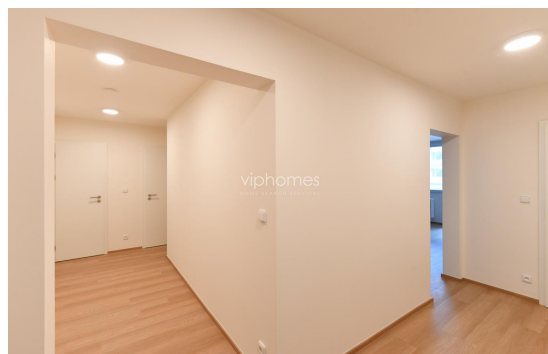
Mária Mihinová

Phone: +420 606 731 973, Email: viphomes@viphomes.cz

Parking in front of the building - blue zone. Easy access to central Prague, multiply trams, buses, 5-minute drive to the Blanka tunnel.

The nearest tram stop: Břevnovský Klášter, 3 - minute walk.

Available immediately.



Estate id: 6989

Web link:

www.viphomes.cz/6989

Agent:

Mária Mihinová

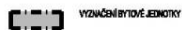
Phone: +420 606 731 973, Email: viphomes@viphomes.cz

PŮDORYS BYTU

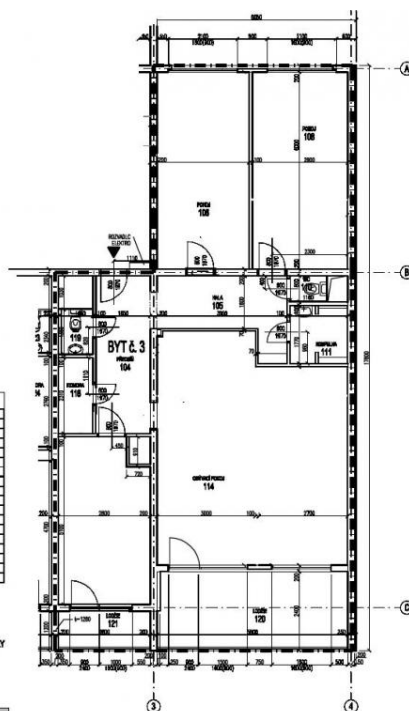
TABULKA MÍSTNOSTÍ

Č. MÍST.	NÁZEV MÍSTNOSTI
101	Předsíň
102	Fašna
103	Obývací
107	Pracovna
108	Ložnice
109	Chodba
110	WC
111	Kuchyň
112	Kuchyň
113	Ložnice
114	Chodba pokojů
115	Síň
116	Kuchyně
117	Kuchyně
118	Kuchyně
119	WC
120	Ložnice
121	Kobere

LEGENDA



SCHEMA - 1.NP



3+1 - 126,40 m²

Ověřeno: Bytové družstvo Satoriova 5716
Satoriova 5716
169 00 Píseň B "Břehov"

podlaží: **1. NP** byt č. **3.**

majitel: **Irena Štefanová**

úplň: _____ záměr: _____
stávek: _____ měřítka: 1:100
vypracoval: Ing. arch. Jan Malenik
datum: 01.11.2006
formát: A4
1x (1/2)

PDF vytvořeno zkušební verzí pdfFactory www.fineprint.cz

Created in Free Online PDF to 3D10 Converter by CADSoftTools
<http://www.cadsofttools.com/pdf-to-3d10-converter>

Estate id:6989

Web link:

www.viphomes.cz/6989

Agent:

Mária Mihinová

Phone: +420 606 731 973, Email: viphomes@viphomes.cz