

## APARTMENT FOR SALE, street U Lesoparku, Praha 6

Premier quality apartment with green views, near tranquil location on the edge of a maintained forest park is close to nature, yet within easy reach of all services. A kindergarten and primary schools are a 5-minute walk away (no need to cross the main road). Supermarkets and a large shopping center are within a short driving distance. A sports center was opened near the project in May of this year, which offers a large number of sports and wellness activities, including the facilities of a state-of-the-art swimming pool and many saunas. Right in the neighboring park, your children will have fun on the playgrounds with attractive play elements, a lookout with a slide. A piece of nature in Prague with a huge number of fabulous wooden climbing frames, an observation deck with a toboggan and a BMX track Conveniently located for the German International School, for the shops (Ikea, Galerie Nove Butovice, Metropole Zličín), and transport links. The residential project on the border of the Motol and Řepy districts, is located 3 minutes' walk away from tram and bus stops, which will take you to the city center in 15 minutes. The location is also ideal for frequent travel to the airport.

\* 113,6 m<sup>2</sup>

\* terraces 28,14 m<sup>2</sup> a 33,20 m<sup>2</sup>

\* storage cubicle and one parking place

\* south oriented



**20 516 000 CZK**

cena včetně provize a kompletního právního servisu

### Specification

Area: 113 m<sup>2</sup>

Bedrooms: 2

Bathrooms: 1

Floor: 2nd floor

☒ Terrace (62 m<sup>2</sup>)

☒ parkovací stání

☒ Storage room

**Estate id:** 6858

**Web link:**

[www.viphomes.cz/6858](http://www.viphomes.cz/6858)

**Agent:**

Mária Mihinová

Phone: +420 606 731 973, Email: [viphomes@viphomes.cz](mailto:viphomes@viphomes.cz)

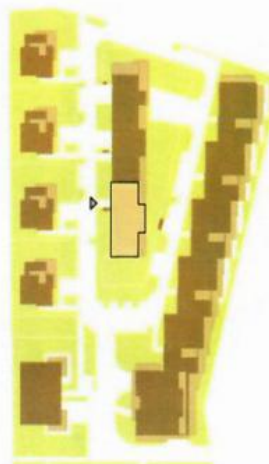
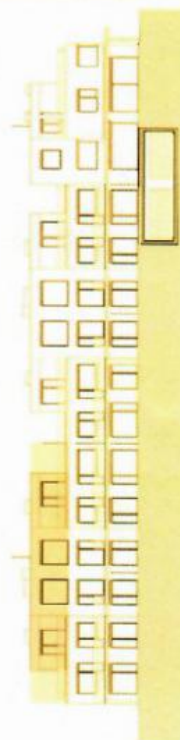
# LESOPARK MOTOL



## BYT C.1.1.6 3+kk 3.np

6.3.1	CHODBA	14,34 m <sup>2</sup>
6.3.2	OBYTNÝ PROSTOR	47,34 m <sup>2</sup>
6.3.3	POKOJ	14,78 m <sup>2</sup>
6.3.4	CHODBA	3,89 m <sup>2</sup>
6.3.5	KOUPELNA	4,07 m <sup>2</sup>
6.3.6	LOŽNICE	15,61 m <sup>2</sup>
6.3.7	ŠATNA	3,63 m <sup>2</sup>
6.3.8	KOUPELNA	3,26 m <sup>2</sup>
6.3.9	ŠATNA	3,00 m <sup>2</sup>
6.3.10	VÝTAH	

UŽITNÁ PLOCHA BYTU	109,92 m <sup>2</sup>
PODLAHOVÁ PLOCHA*	113,60 m <sup>2</sup>
6.3.11 TERASA	28,14 m <sup>2</sup>
6.3.12 TERASA	33,20 m <sup>2</sup>



Veskeré vybavení nábytkem, včetně kuchyňské linky, elektrospotřebiče a bytové doplňky nejsou součástí standardního vybavení  
\*Podlahová plocha bytu je vypočítána dle nařízení vlády č. 366/2013 Sb.