



APARTMENT FOR RENT, street Laubova, Prague 3 - Vinohrady

Presented in fantastic condition this 2 bed 2 bath apartment boasts substantial room proportions with a high standard of décor (design by the renowned Donlic studio). Great location - quiet tree lined street in the highly sought after Vinohrady residential neighborhood: the city centre and the throbbing city life are literally at hand – Wenceslas Square is situated within mere five tram stations along the Vinohradská Street. A perfect access to other parts of Prague is guaranteed by the crossing of metro/bus and tram lines at Náměstí Jiřího z Poděbrad. Both shopping and entertainment are to be found at the Flora Palace. Rich social life, exquisite restaurants, chic cafés and small shops, large parks, tree-lined streets with its unique architecture gems create an unforgettable local atmosphere.

The accommodation of approx. 116 m² comprises open-plan kitchen / living room, bespoke joinery housing kitchen units, 2 bedroom, 2 ensuite bathrooms with designer sanitary ware, utility room equipped with a washer, and dryer, and a reception room. Wood floors throughout, recessed lighting / central switch, satellite and Internet connection, alarm, security door, video entry phone. Parking / furnishing can be arranged for extra fee. Cellar available. Tenants fees : deposit for services and utilities CZK 10 000 / month.

Available immediately.

2x 2x

65 000 CZK
+Monthly fees 10 000 CZK

Fee Information 1 month rent + 21 % VAT.

Specification

Area: 116 m²
Bedrooms: 2
Bathrooms: 2
Floor: 2nd floor

☒ Lift

☒ Terrace (18 m²)

Estate id: 5665

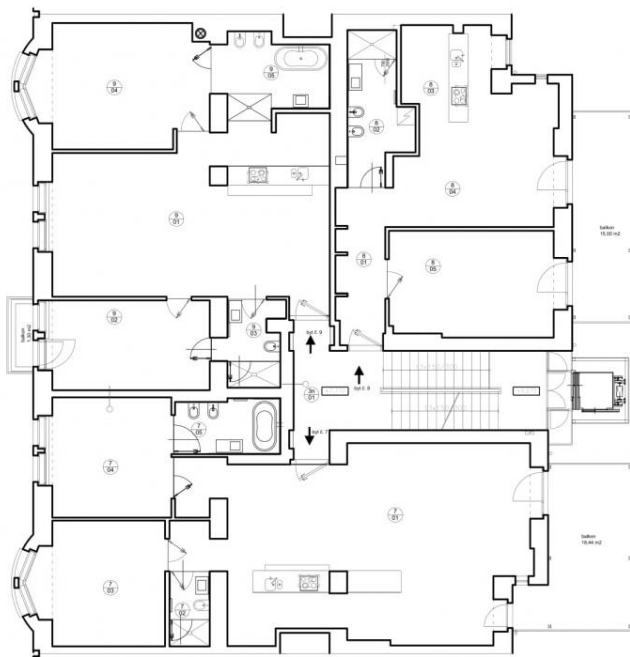
Web link:

www.viphomes.cz/5665

Agent:

Mária Mihinová

Phone: +420 606 731 973, Email: viphomes@viphomes.cz



Laubova 5, č.p. 1709
Praha - Vinohrady
3.NP

BYT 6.7			
OZN.	MÍSTNOST	m²	PODLAHA
701	obývací pokoj s kuchyní	70,07	dlév. parkety
702	koupelna I.	3,80	keram. dlažba
703	ložnice I.	18,48	dlév. parkety
704	ložnice II.	17,40	dlév. parkety
705	koupelna II.	6,63	keram. dlažba
BYT 6.7 celkem		116,06	

BYT 6.8			
OZN.	MÍSTNOST	m²	PODLAHA
801	chodba	8,80	dlév. parkety
802	koupelna	9,34	keram. dlažba
803	kuchyně + jídelna	18,44	dlév. parkety
804	obývací pokoj	14,27	dlév. parkety
805	ložnice	20,92	dlév. parkety
BYT 6.8 celkem		71,77	

BYT 6.9			
OZN.	MÍSTNOST	m²	PODLAHA
901	obývací pokoj s kuchyní	51,91	dlév. parkety
902	ložnice I.	17,07	dlév. parkety
903	koupelna I.	5,75	keram. dlažba
904	ložnice II.	23,79	dlév. parkety
905	koupelna II.	9,92	keram. dlažba
BYT 6.9 celkem		108,44	

3n01			
schodiště	28,43	teraso	

Estate id: 5665

Web link:

www.viphomes.cz/5665

Agent:

Mária Mihinová

Phone: +420 606 731 973, Email: viphomes@viphomes.cz