

## APARTMENT FOR RENT, street Markétská, Praha 6

The apartment has undergone extensive, complete renovation and is located on the first floor of a renovated building, facing south-east. The apartment has a 4+kk layout with 116 m<sup>2</sup> of living space, three bedrooms, a living room with a kitchen, a bathroom with a shower, two separate toilets, and a utility room housing a washing machine and additional storage space.

The apartment features a large terrace spanning the entire living area, and one bedroom opens onto a balcony (both facing south).

The apartment is very bright and well-designed—a separate sleeping area, i.e., two bedrooms with an adjacent bathroom featuring a shower and toilet. The third bedroom is located in the other part of the apartment next to the living room and has access to a balcony.

The kitchen is modern with built-in appliances (electric induction cooktop, electric oven, dishwasher, range hood, refrigerator with freezer).

The living room is spacious, with one section for a dining table and the other for relaxation.

The flooring is vinyl; the bathroom and toilets feature modern tile designs.

The bedrooms have blinds on the windows.

Monthly fees, including electricity consumption, amount to 8,500 CZK and are billed annually based on actual consumption.

Parking in front of the building in the blue zone.

1x  3x 

**42 000 CZK**  
+Monthly fees 8 500 CZK

### Specification

Area: 125 m<sup>2</sup>  
Bedrooms: 3  
Bathrooms: 1  
Floor: Ground floor

- Balcony
- Washing machine
- Terrace

Estate id: 6989

Web link:

[www.viphomes.cz/6989](http://www.viphomes.cz/6989)

Agent:

Mária Mihinová

Phone: +420 606 731 973, Email: [viphomes@viphomes.cz](mailto:viphomes@viphomes.cz)

Excellent location in Břevnov, quiet, surrounded by greenery, near Ladronka Park, and amenities.

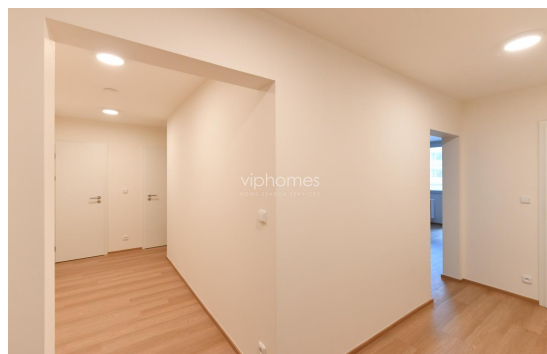
Transportation: 5-minute drive to the Blanka Tunnel, bus.

The nearest shopping options are on Bělohorská Street (cafés, Albert supermarket, shops, bakery, restaurants).

School and kindergarten nearby.

The nearest tram stop to Markétská in Prague 6 is Břevnovský Klášter. It's a 3-minute walk.

Available immediately.



**Estate id:** 6989

**Web link:**

[www.viphomes.cz/6989](http://www.viphomes.cz/6989)

**Agent:**

Mária Mihinová

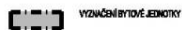
Phone: +420 606 731 973, Email: [viphomes@viphomes.cz](mailto:viphomes@viphomes.cz)

PŮDORYS BYTU

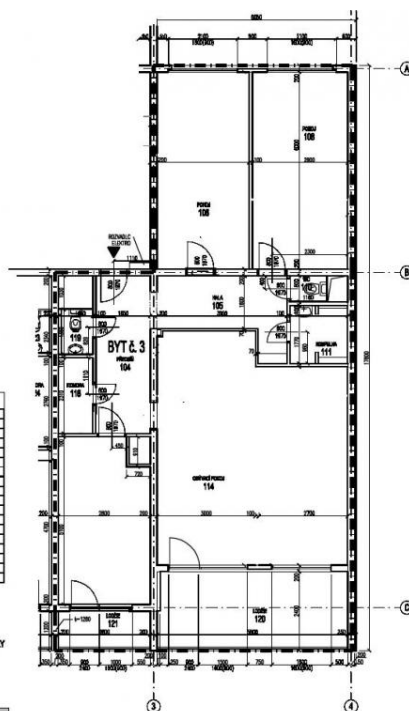
TABULKA MÍSTNOSTÍ

Č. MÍST.	NÁZEV MÍSTNOSTI
101	Předsíň
102	Falša
103	Ložnice
107	Pracovna
108	Ložnice
109	Chodba
110	WC
111	Kuchyně
112	Koridór
113	Ložnice
114	Obývací pokoj
115	Síň
116	Kuchyně
117	Koridór
118	Koridór
119	WC
120	Ložnice
121	Kobka

LEGENDA



SCHEMA - 1.NP



**3+1** - 126,40 m<sup>2</sup>

Ověřeno v: Bytové družstvo Satoriova 5716 Satoriova 5716 169 00 Píseň B "Břehov"

podlaží: **1. NP** byt č. **3.**

majitel: **Irena Štefanová**

úplň: \_\_\_\_\_ zarámkování: \_\_\_\_\_ měřítko: 1:100  
vypracoval: Ing. arch. Jan Malenik datum: 01.11.2006 formát: A4 1x (1/2)

PDF vytvořeno zkušební verzí pdfFactory [www.fineprint.cz](http://www.fineprint.cz)

Estate id: 6989

Web link:

[www.viphomes.cz/6989](http://www.viphomes.cz/6989)

Agent:

Mária Mihinová

Phone: +420 606 731 973, Email: [viphomes@viphomes.cz](mailto:viphomes@viphomes.cz)