



APARTMENT FOR RENT, street Nad Nuslemi, Praha 4

Boasting a private terrace with nice far reaching views, this 3-bedroom apartment is set on the upper ground floor of a private villa, situated in an upscale, primarily residential area of Prague 4 - Nusle. Prague 4 currently ranks among the Prague's most sought-after localities, both due to its top quality housing and because of the presence of major companies that have their registered offices in the newly built office centres. The city centre can be reached within several minutes by car or by public transport. A wide range of amenities including miscellaneous cultural and sports facilities can be found within a walking distance.

The main living area includes a spacious living room, a separate contemporary kitchen – all necessary build in appliances such as dishwasher, oven, glass-ceramic cooking hob, modern stove extractor, fridge and freezer; terrace access, a bedroom with an ensuite bathroom (bath tub, toilet), 2 more bedrooms, a shared shower bathroom (toilet, bidet), an additional toilet, and entrance hall.

High-quality wooden floors, large scaled bathroom tiles, fully renovated bathroom.

Optional parking space for 1 car included.

Available immediately.

The Nusle district is located in a picturesque valley south of the center of Prague. The area is dominated by the Nuselský Bridge, which spans the valley. The central part of Nusle is formed by Bratří Synků Square, around which commercial and cultural activities are concentrated, with all civic amenities including theaters, small shops, medical offices, and hypermarkets.



57 000 CZK
+Monthly fees 15 000 CZK

Fee Information 1 month rent + 21 % VAT.

Specification

Area: 200 m²

Bedrooms: 3

Bathrooms: 2

Floor: Ground floor

☒ Terrace

☒ Washing machine

☒ Garage

☒ Dryer

Estate id: 6971

Web link:

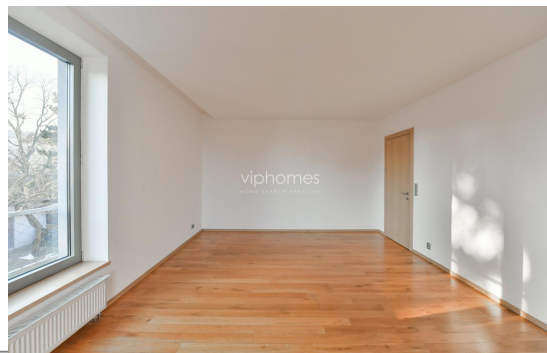
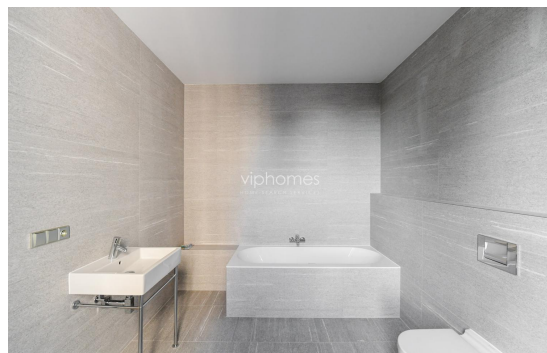
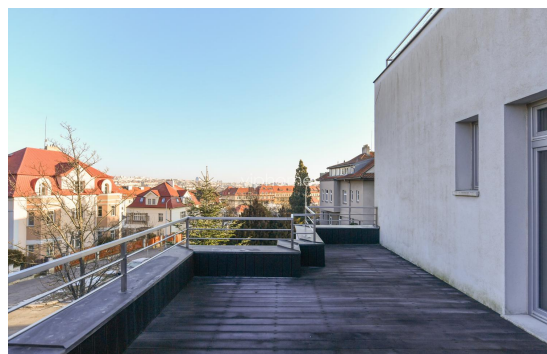
www.viphomes.cz/6971

Agent:

Mária Mihinová

Phone: +420 606 731 973, Email: viphomes@viphomes.cz

Fast and easy access to the city center, tram, bus.



Estate id:6971

Web link:

www.viphomes.cz/6971

Agent:

Mária Mihinová

Phone: +420 606 731 973, Email: viphomes@viphomes.cz