



OFFICE FOR RENT, street Ke Hrádku, Praha-Kunratice

Offices for rent in a detached family house with private landscaped garden and 4 car parking. Popular upscale residential location, convenient to the D1 highway, the Chodov metro station / shopping mall, (Westfield Chodov), and 4 international schools (PBS, Czech-British Elementary School). Excellent sport facilities: the area is renowned for its greenery with several local ponds, and a lake used for skating and ice hockey. Tennis / Squash Club across the street.

Well presented home comprises a spacious living room with a fireplace, a dining space, a fully fitted kitchen featuring integrated Bosch appliances, 6 rooms, 2 walk-in closets, 2 separate W/Cs, and formal entry.

Additional property amenities include a fitness room, a laundry room and storages. The house is equipped with alarm, hardwood floors, blinds, satellite connection, shed for garden tools. Parking in the garage + car port / open air garage. Rent: 88 000 / month. Bills not included, monthly deposit for utilities cca 10 000 CZK / month.

Parking for two cars monthly in the amount total of 4.000 / CZK.

Data network, internet, telephone lines, security sytem for the entire house.

A 1,000 m² garden.

Gas, electricity, and water are transferred to the tenant's name, and the tenant pays based on actual consumption. The tenant is responsible for paying for internet service.

Gardening services and municipal waste collection are paid to the landlord monthly based on advance invoices.

230 CZK

Specification

Total area: 417 m²

- Alarm
- Double garage
- Washing machine
- Garden (1000 m²)
- Internet
- Dryer

Estate id: 6991

Web link:

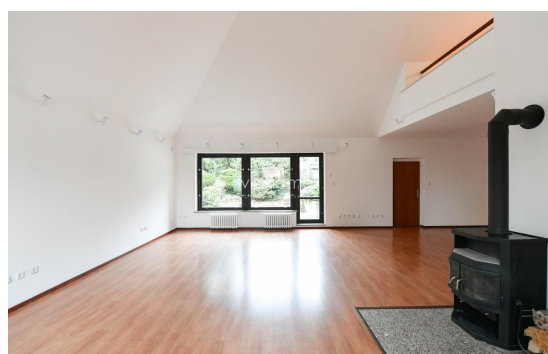
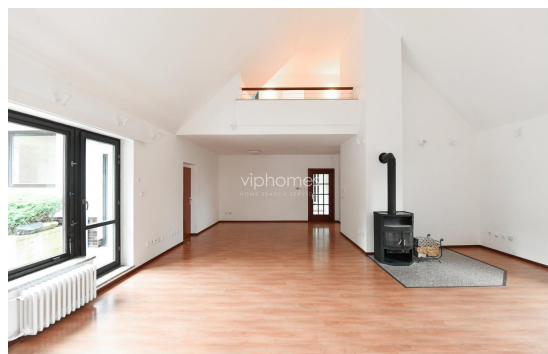
www.viphomes.cz/6991

Agent:

Mária Mihinová

Phone: +420 606 731 973, Email: viphomes@viphomes.cz

Available immediately



Estate id: 6991

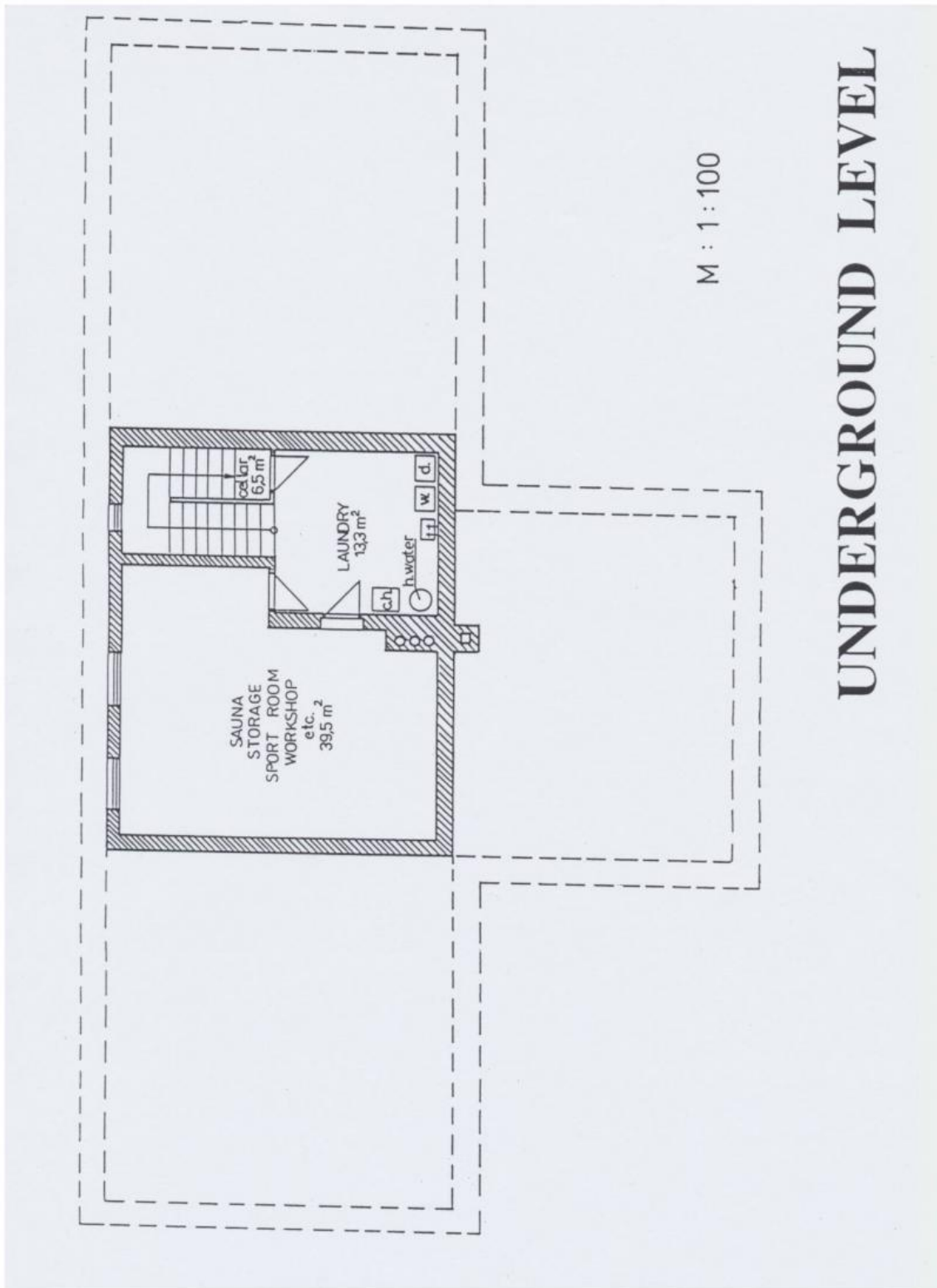
Web link:

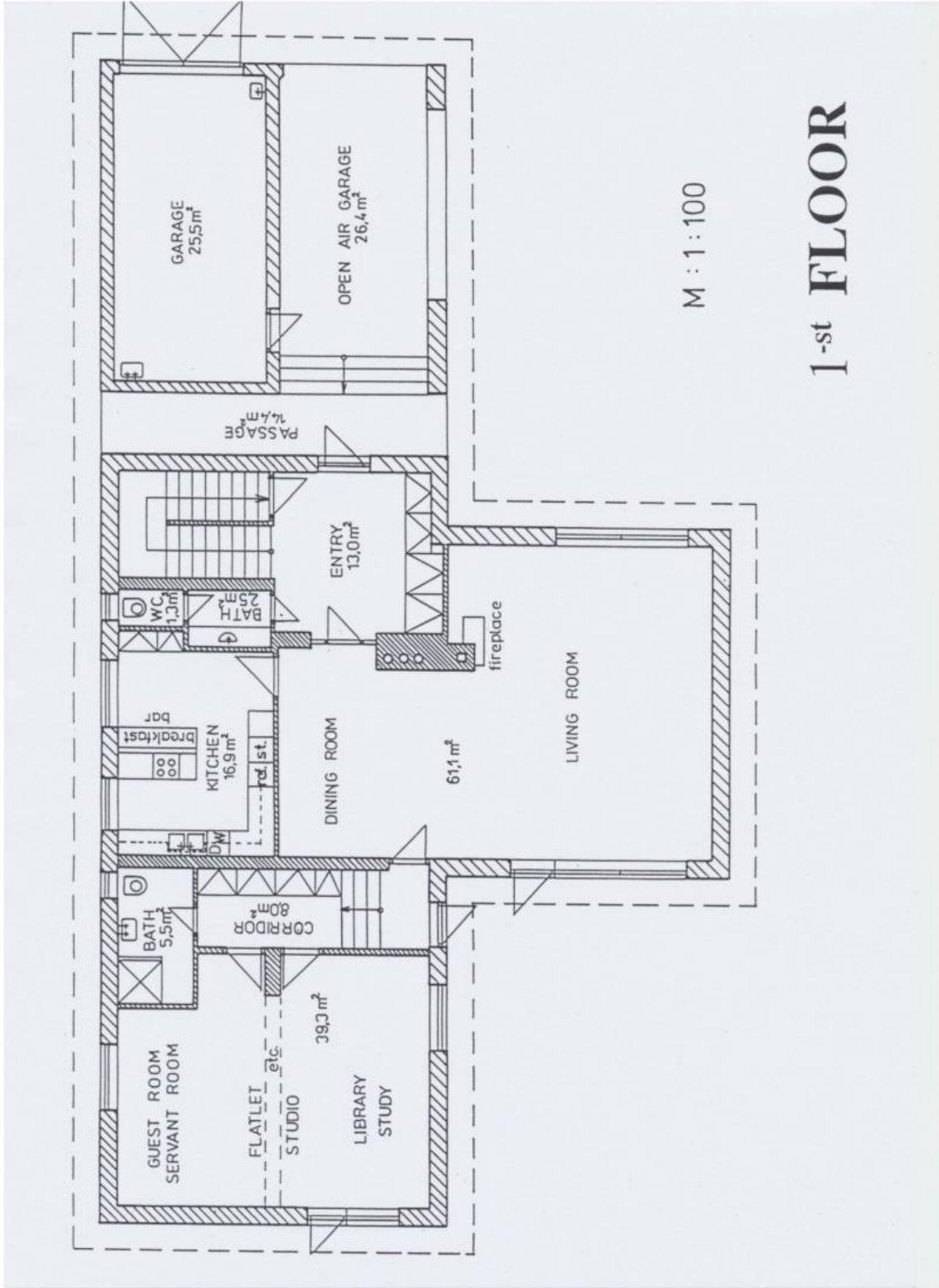
www.viphomes.cz/6991

Agent:

Mária Mihinová

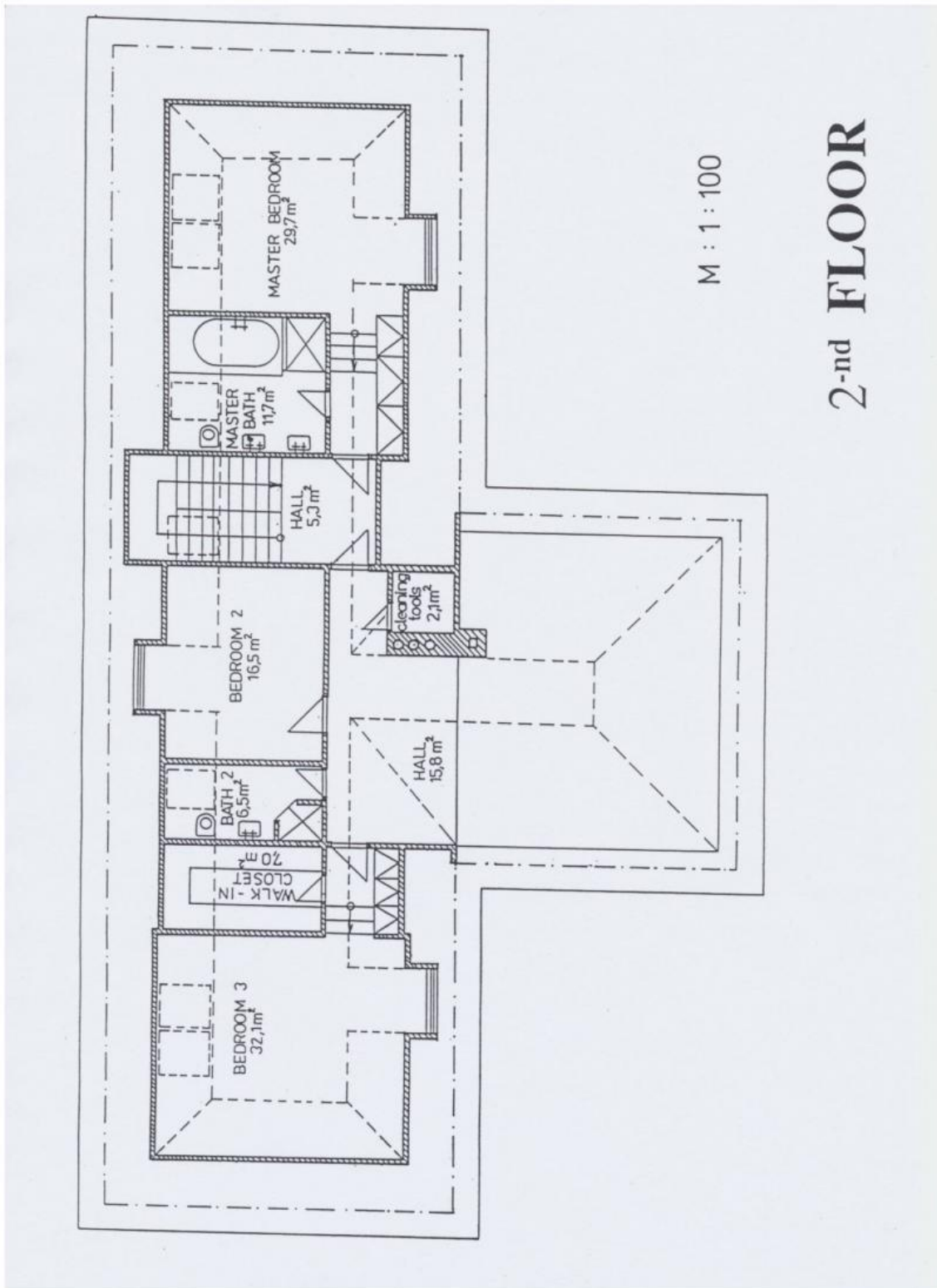
Phone: +420 606 731 973, Email: viphomes@viphomes.cz





1-st FLOOR

M : 1 : 100



M : 1 : 100

2-nd FLOOR