



APARTMENT FOR RENT, square Jiřího z Poděbrad, Praha 3 - Vinohrady

A beautifully presented three-bedroom apartment, that has undergone a complete renovation with many special changes, that are unique to this apartment. Set over the first floor of exclusive Art-Deco building, overlooking one of the prime Vinohrady squares - Náměstí Jiřího z Poděbrad with a masterpiece of modern architecture, the Church Of The Most Sacred Heart Of Our Lord - the work of a noted architect Jože Plečnik. Expat's favorite location Royal Vinohrady is high up on many wish lists - wealth of amenities, lovely classic architecture, fine dining establishments, plenty of culture and a 'posh' reputation contribute to its first-rate reputation. Easy and fast access to all parts of Prague - Metro, line A virtually at your doorstep.

Apartment with classic architecture, retaining many original features includes conventional entrance hall, a living room, a fully fitted open kitchen, dining area, three separate bedrooms, modern well appointed bathrooms, (one with a bathtub and a toilet, second with a shower and a toilet), an additional separate toilet, utility/storage room.

Air-conditioning, hardwood floors, tiles, built-in wardrobes, security entry door, washer/dryer. The apartment is offered on unfurnished bases, can be equipped with furniture at a higher rent. One garage parking space is included, located a 5 minute walk from the building. Tenant's fees: service charges and water: Kč 2000/person/month. Gas and electricity will be transferred to the tenant. Available March 1,2020

2x  3x 

87 800 CZK
+Monthly fees 2 000 CZK

Specification

Area: 107 m²
Bedrooms: 3
Bathrooms: 2
Floor: 1st floor

Lift

Estate id: 4814

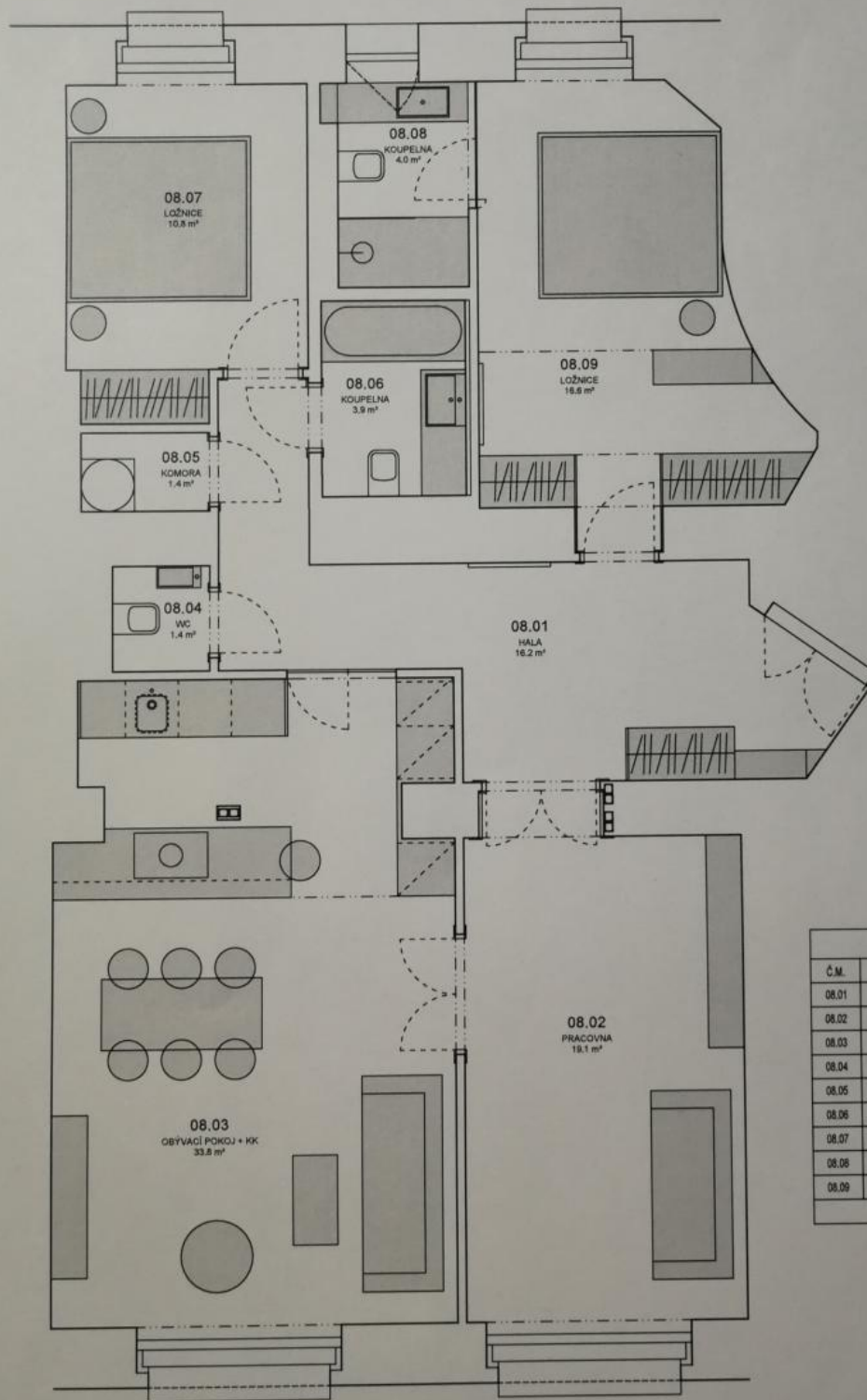
Web link:

www.viphomes.cz/4814

Agent:

Mária Mihinová

Phone: +420 606 731 973, Email: viphomes@viphomes.cz



| TABULKA MÍSTNOSTÍ | | |
|-------------------|--------------------|----------------------|
| Č.M. | MÍSTNOST | PLOCHA |
| 08.01 | HALA | 16.2 m ² |
| 08.02 | PRACOVNA | 19.1 m ² |
| 08.03 | OBYVACÍ POKOJ + KK | 33.8 m ² |
| 08.04 | WC | 1.4 m ² |
| 08.05 | KOMORA | 1.4 m ² |
| 08.06 | KOUPELNA | 3.9 m ² |
| 08.07 | LOŽNICE | 10.8 m ² |
| 08.08 | KOUPELNA | 4.0 m ² |
| 08.09 | LOŽNICE | 16.8 m ² |
| CELKEM | | 107.2 m ² |

SMLXL

SPRÁVNÍČKA, TEL: +420 733 738 80; +420 774 167 204, ADRESA: BOŘHOVČOVA 896/103, 130 00 PRAHA 3 – ŽŮDŮV

| | | | |
|---------|-------------------------------|---------------|------------|
| PROJEKT | JIŘIHO Z PODĚBRAD | DATUM | 18/10/2019 |
| ADRESA | JIŘIHO Z PODĚBRAD | MĚŘITKO | 1:50 |
| VÝKRES | PŮDORYS BYT 08 - DISPOZICE | ČÍSLO VÝKRESU | 01 |