

## HOUSE FOR RENT, Prague 5 - Smíchov

Large and bright semidetached townhouse surrounded by tranquil ambiance of Klamovka Park. Convenient access downtown, just a minute on foot to a tram and bus stop, complete facilities, close to a golf course and other opportunities for active sports. 4 tram stops to Nový Smíchov, Shopping Centre – services, shops, entertainment, relax. Convenient for the French and German International Schools.

Surrounded by lush greenery the home offers a spacious living room (51 m<sup>2</sup>) with a fireplace, (great city views), an upgraded kitchen installed with modern units and integrated appliances, terrace / garden accessed from living areas, four bedrooms, two bathrooms with en suite facilities. Built-in closet, laundry room equipped with washer and dryer, solid wooden floors, outdoor blinds, security foil in all windows, satellite TV connection, telephone, alarm. Integrated garage for 2 cars. Garden surrounded by 2,5 m wall for maximum security and privacy; garden storage for tools and garden furniture.

Tenant's fees approx. CZK 7 000/month.

Available July 2024.

2x  4x  

**65 000 CZK**  
+Monthly fees 7 000 CZK

### Specification

House - Town house

Area: 183 m<sup>2</sup>

Bedrooms: 4

Bathrooms: 2

Alarm

Garage

Garden (280 m<sup>2</sup>)

**Estate id:** 2854

**Web link:**

[www.viphomes.cz/2854](http://www.viphomes.cz/2854)

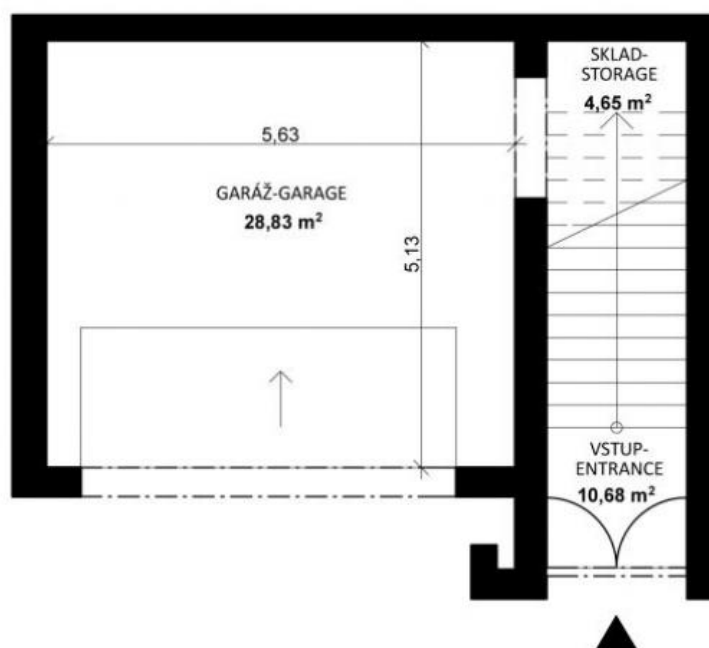
**Agent:**

Mária Mihinová

Phone: +420 606 731 973, Email: [viphomes@viphomes.cz](mailto:viphomes@viphomes.cz)

# DŮM A (D) HOUSE SUTERÉN-UNDERGROUND

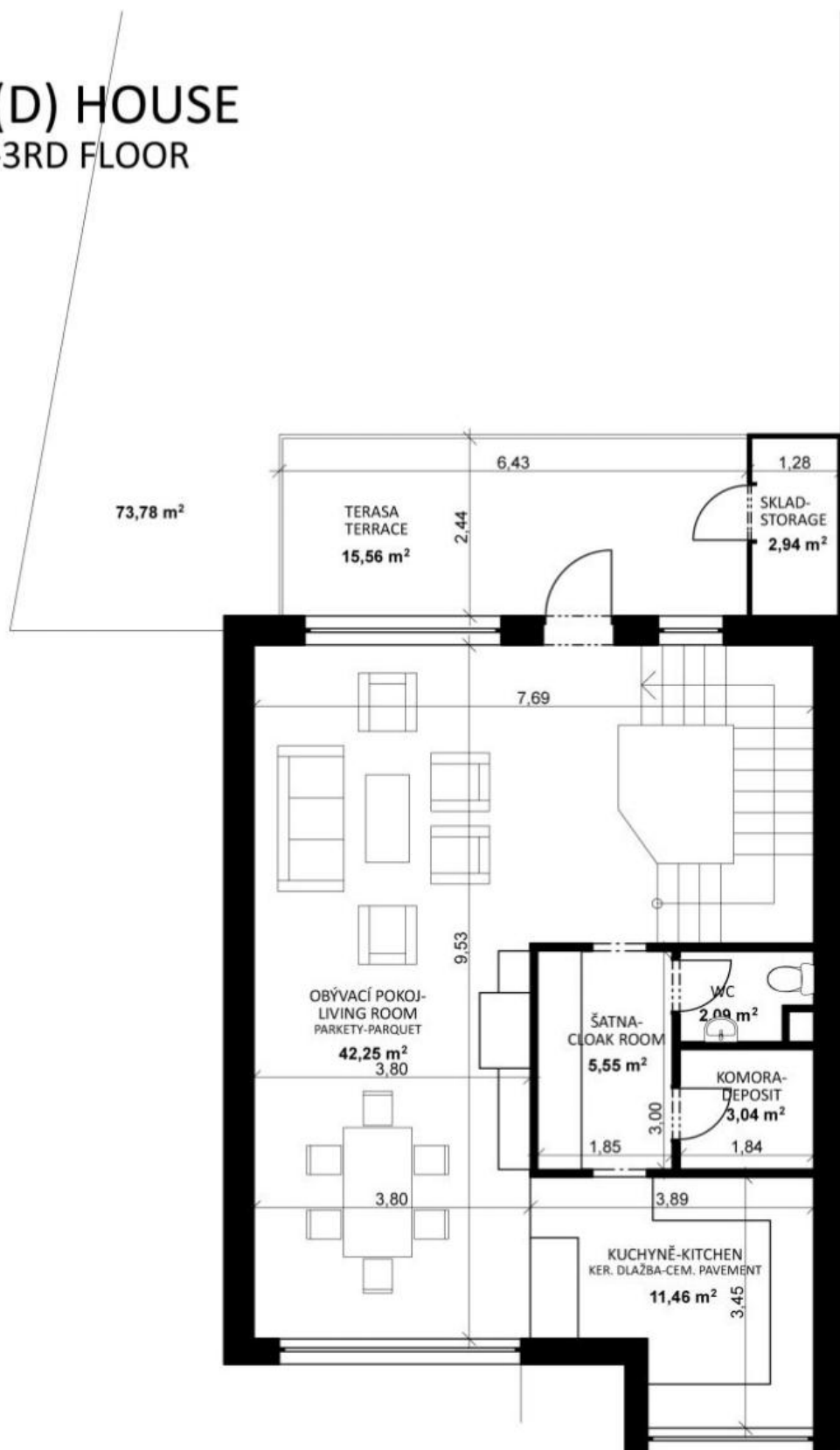
M 1:100



# DŮM A (D) HOUSE

## 3. PODLAŽÍ-3RD FLOOR

M 1:100



# DŮM A (D) HOUSE

## 2. PODLAŽÍ-2ND FLOOR

M 1:100



# DŮM A (D) HOUSE PŘÍZEMÍ-GROUND FLOOR

M 1:100

