

HOUSE FOR RENT, street Chmelařská, Praha 5

A modern and spacious townhouse tucked away in this sought after development, within easy reach of mainline metro station and local amenities. Walking distance to German International School, metro station Nove Butovice – yellow line B, shopping mall Galerie Nove Butovice.

The accommodation on offer is arranged over three floors, the ground floor consisting of open concept of a living room with largescaled windows leading to the garden, contemporary kitchen unit with integral appliances and a guest toilet. The living area boasts a fireplace as the centerpiece of the room and ample space to relax. On the first floor you will find three bedrooms: one a master bedroom with a walk-in closet and an ensuite bathroom, two further bedrooms, and a full modern design bathroom. The basements houses a laundry room, storages and a boiler room.

Parquet floors, blinds, dishwasher, Internet and satellite TV connection, audio entry phone. The house is equipped with a safety system that is managed by a security agency.

The location and quality of the house make way for effortless living.

Tenant's fees approximately Kč 8.000/month.



65 000 CZK
+Monthly fees 8 000 CZK

Specification

House - Town house

Area: 240 m²

Bedrooms: 3

Bathrooms: 2

Balcony (7 m2)

Alarm

Double garage

Terrace (26 m2)

Garden (287 m2)

Estate id: 4737

Web link:

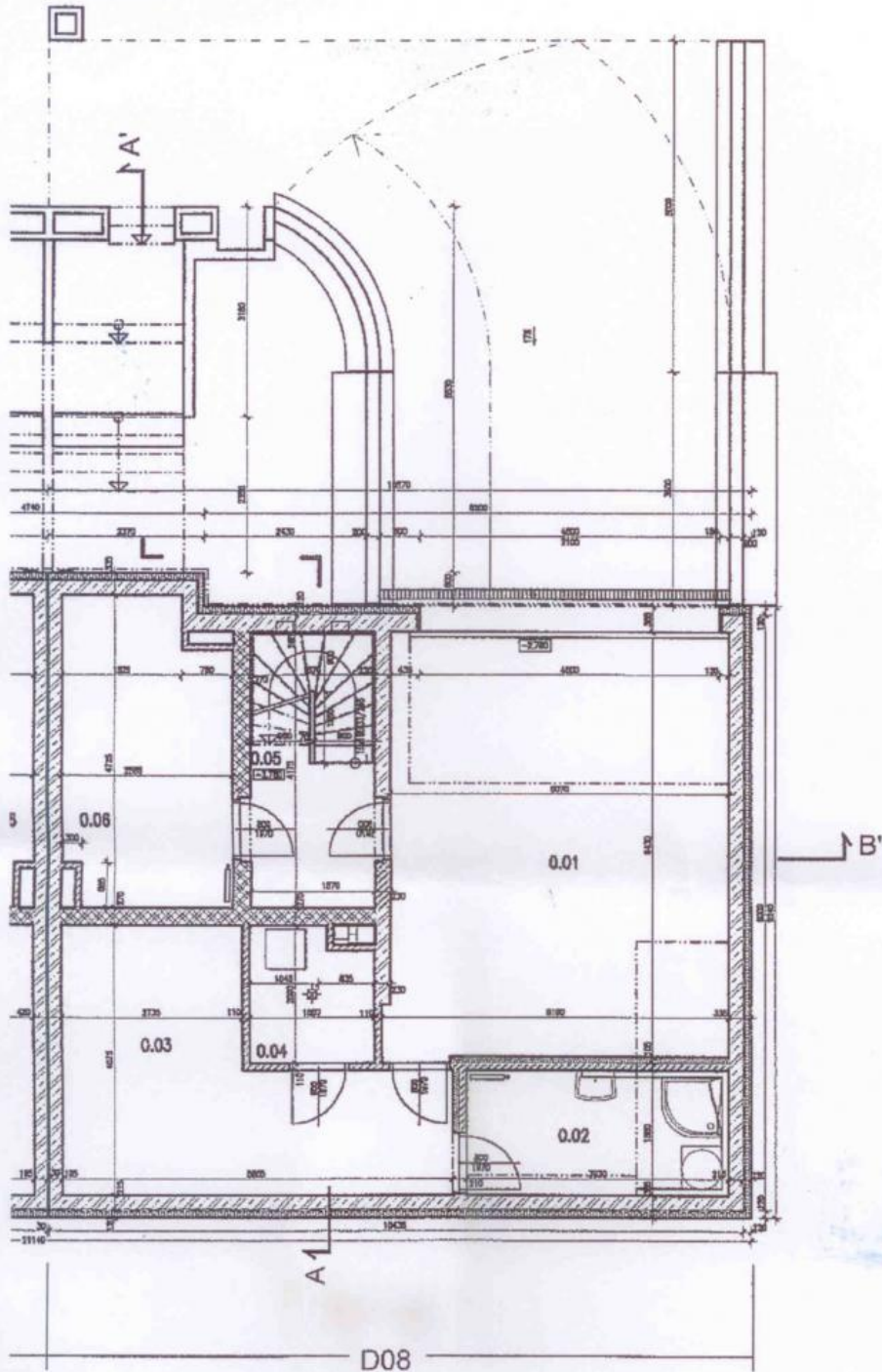
www.viphomes.cz/4737

Agent:

Mária Mihinová

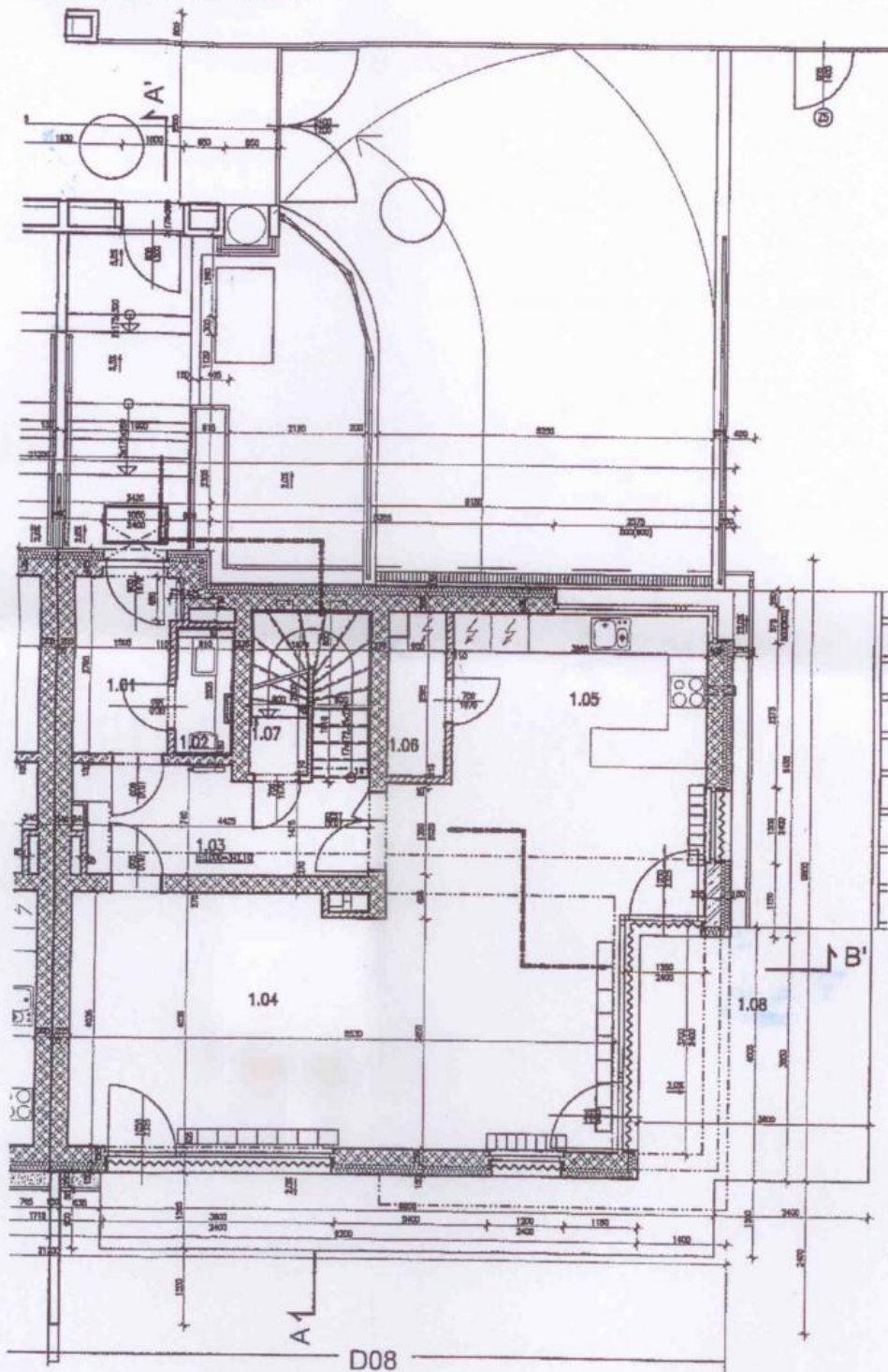
Phone: +420 606 731 973, Email: viphomes@viphomes.cz

ĽUDORYS 1.PP



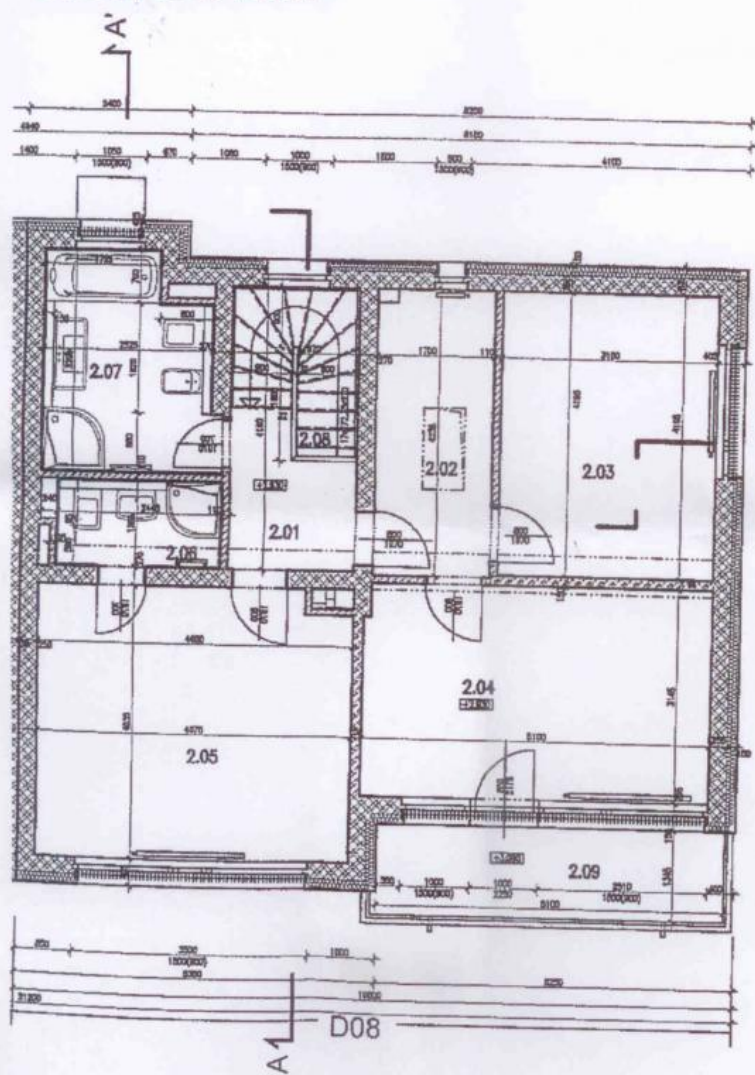
DVOJDŮM D08	
4+k - celková užitná plocha: 228,40 m ²	
0.01	GARÁŽ 32,79 m ²
0.02	PRÁDELNA 7,39 m ²
0.03	SKLAD 17,07 m ²
0.04	KOTELNA 3,65 m ²
0.05	CHODBA 7,81 m ²
0.06	DÍLNA 11,38 m ²
CELKEM 80,08 m ²	

PŮDORYS 1.NP



DVOJDŮM D08	
4+kk - celková užitná plocha: 228,40 m ²	
1.01	ZÁDVEŘÍ 4,36 m ²
1.02	WC 1,82 m ²
1.03	CHODBA 7,34 m ²
1.04	OBÝVACÍ POKOJ 43,92 m ²
1.05	KUCHYŇE 10,79 m ²
1.06	SPIŽ 2,22 m ²
1.07	PODESTA, SCHODIŠTĚ 4,19 m ²
CELKEM	74,64 m ²
1.08	TERASA 25,71 m ²

ĽUDORYS 2.NP



DVOJDŮM D08		
4+kk - celková užitná plocha: 228,40 m ²		
2.01	CHODBA	3,73 m ²
2.02	ŠATNA	7,14 m ²
2.03	POKOJ	13,34 m ²
2.04	POKOJ	16,00 m ²
2.05	POKOJ	18,59 m ²
2.06	KOUPELNA + WC	3,14 m ²
2.07	KOUPELNA + WC	7,82 m ²
2.08	SCHODISTĚ	3,91 m ²
CELKEM		73,67 m ²
2.09	BALKON	6,88 m ²