

HOUSE FOR RENT, street U dvou srpů, Prague 5 - Smíchov

Large and bright semidetached townhouse with terraces and lovely garden, surrounded by the tranquil ambiance of Klamovka Park. Excellent access to the city center and close to Nový Smíchov, Shopping Centre – shops, services, entertainment, relax. Convenient for the French and German International Schools.

Surrounded by greenery, it offers a spacious living room with a fireplace, (great city views), an upgraded kitchen installed with modern units and integrated appliances, terrace/garden accessed from living areas, four bedrooms, two bathrooms with en suite facilities. Built-in closet, laundry room equipped with washer and dryer, solid wood floors, outdoor blinds, security foil in all windows, satellite TV connection, telephone, alarm. The lower ground floor comprises garage with a remote controlled gate. Garden surrounded by 2,5 m wall for maximum security and privacy; garden storage for tools and garden furniture.

Convenient access downtown, just a minute on foot to a tram and bus stop, complete facilities, close to a golf course and other opportunities for active sports. Tenant's fees approx. CZK 7 000/month.

2x 

4x 



65 000 CZK
+Monthly fees 7 000 CZK

Specification

Detached house

Area: 250 m²

Bedrooms: 4

Bathrooms: 2

Balcony

Garden (181 m²)

Double garage

Terrace

Alarm

Internet

Estate id: 1711

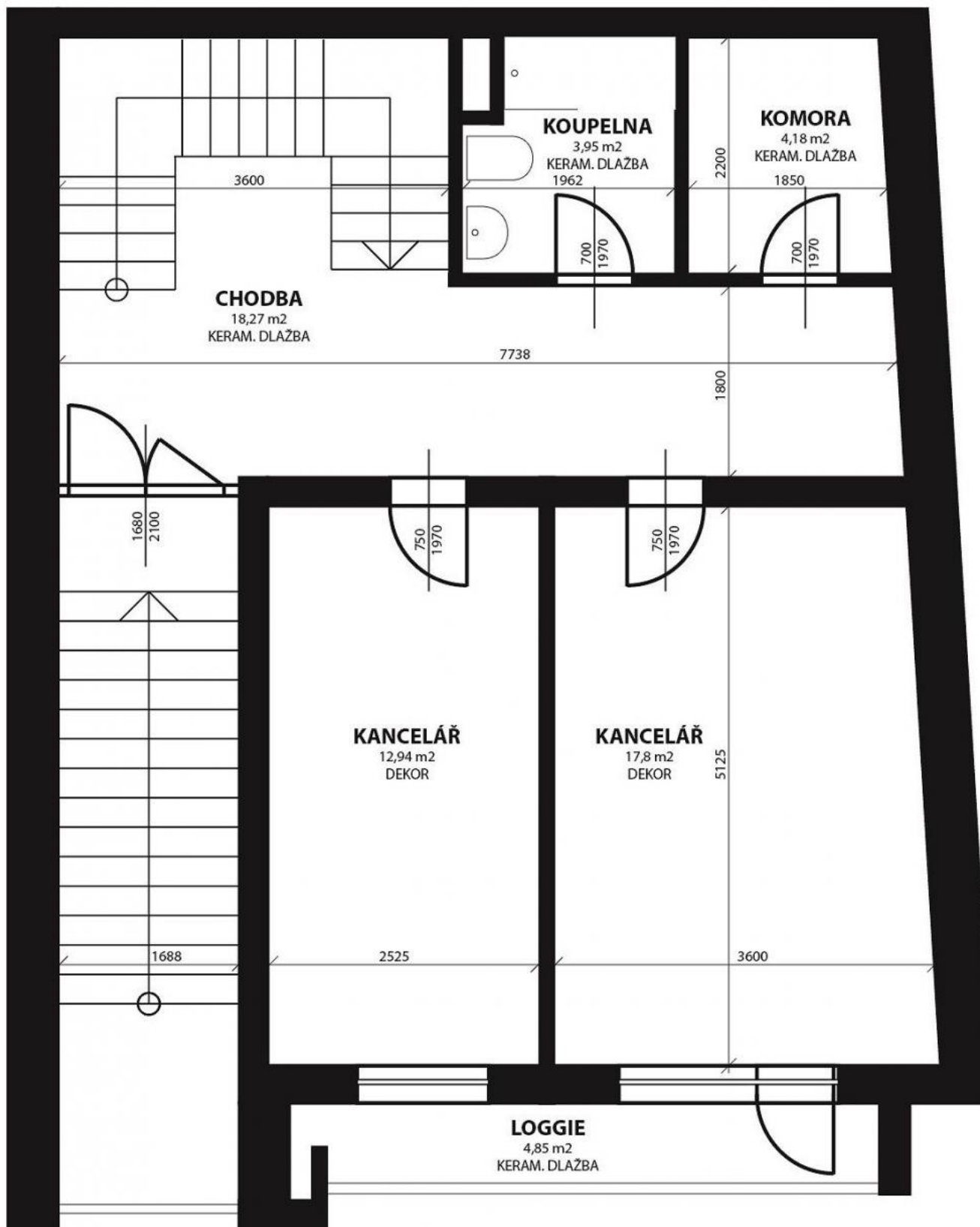
Web link:

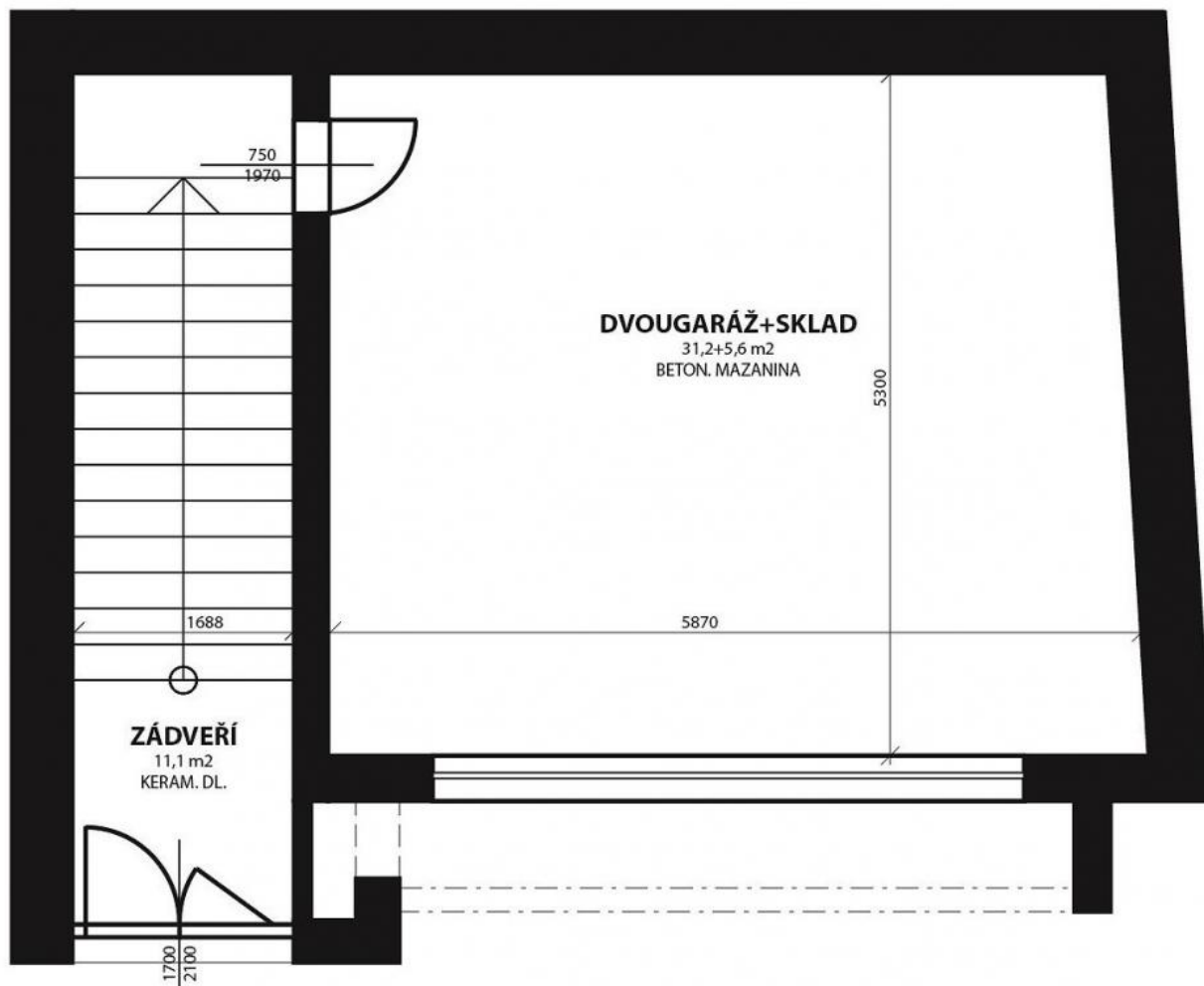
www.viphomes.cz/1711

Agent:

Mária Mihinová

Phone: +420 606 731 973, Email: viphomes@viphomes.cz





Estate id: 1711

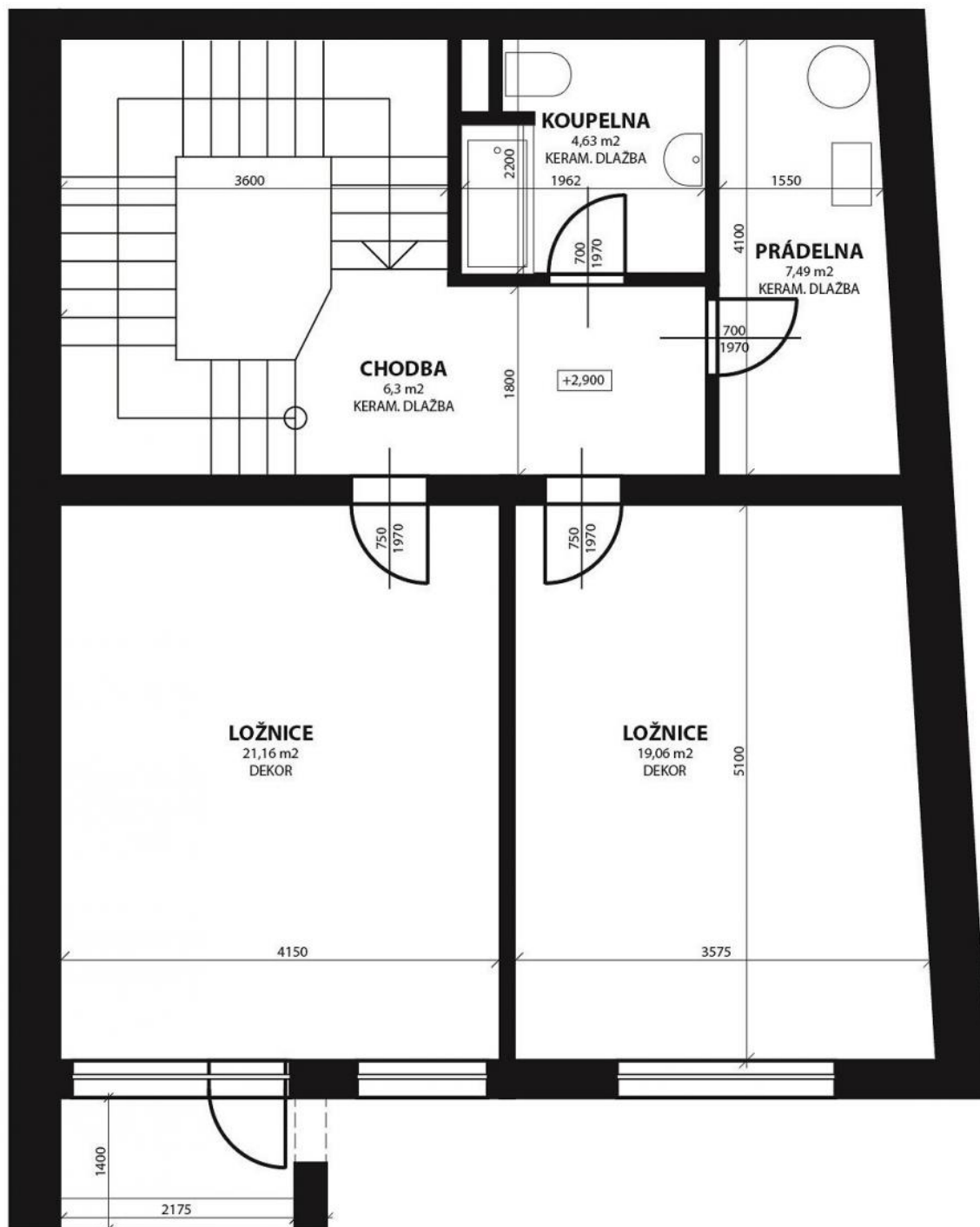
Web link:

www.viphomes.cz/1711

Agent:

Mária Mihinová

Phone: +420 606 731 973, Email: viphomes@viphomes.cz



Estate id: 1711

Web link:

www.viphomes.cz/1711

Agent:

Mária Mihinová

Phone: +420 606 731 973, Email: viphomes@viphomes.cz

